

# Residential EA\_Gas integral mount replacement drive shaft

Assembly instructions  
IL42-5036B

## General

On occasion, the drive shaft assembly in a EA\_Gas module needs replacement. This document covers the installation of a new replacement drive shaft assembly for a variety of gas modules.

## Replacement drive shaft assembly kit

Drive shaft assembly kits are specific to each type of gas module. The appropriate drive shaft assembly kit must be ordered and used depending on the type of gas module. A replacement drive shaft assembly kit comes in two pieces:

- one piece is the draft shaft with magnet, which can come in three variations
- the second is either a wriggler, coupler, or gear, depending on the gas module type

Figure 1. Drive shaft variations

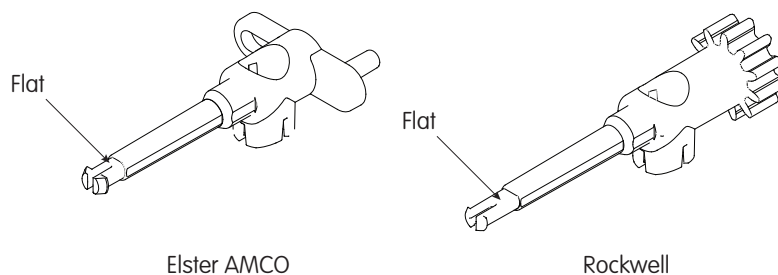
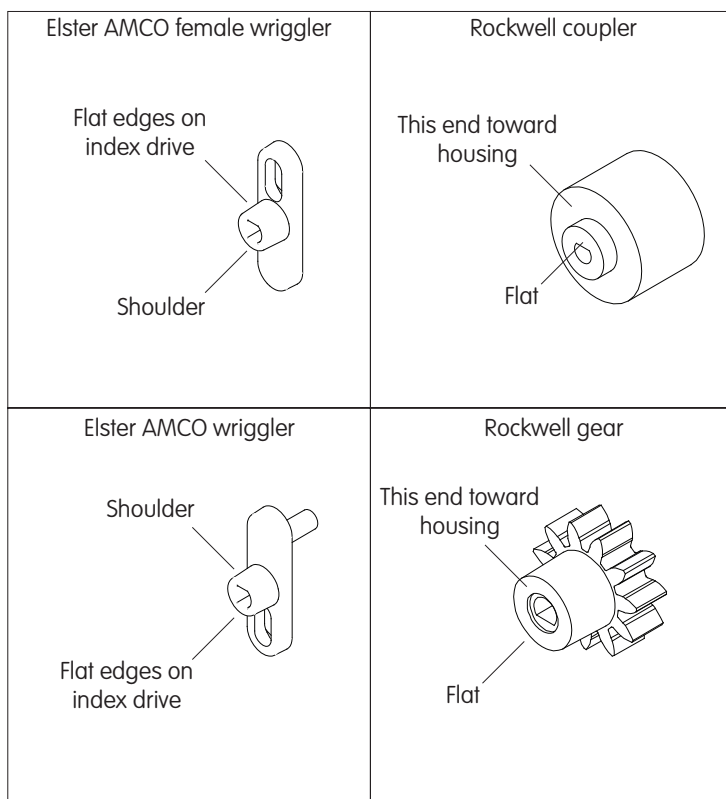


Figure 2. Wiggler, coupler, and gear variations



## Replacement drive shaft assembly kit part numbers

Table 1 identifies each gas module type with the associated drive shaft replacement kit, drive shaft, and wiggler/coupler/gear part number. All gas module types in Table 1 use the same magnet (Elster part number 3A35301H01).

Table 1. Gas module types and associated drive shaft assemblies

EA_Gas module description	Module style number	Drive shaft replacement kit number	Drive shaft part number	wiggler/coupler/gear part number
AMCO, integral mount, version 2	EG212000000	1C12551G01	1C12271H01	1B11775H01
AMCO 5B, integral mount, version 2	EG252000000	1C12552G01	1C12271H01	1B11808H01
Rockwell, integral mount, version 2	EG222000000	1C12553G01	1C12338H01	1B11809H01
Rockwell 415, integral mount version 2	EG242000000	1C12554G01	1C12343H01	1B11819H01
AMCO, integral mount, version 3	EG214000000	1C12551G01	1C12271H01	1B11775H01
AMCO 5B, integral mount, version 3	EG254000000	1C12552G01	1C12271H01	1B11808H01

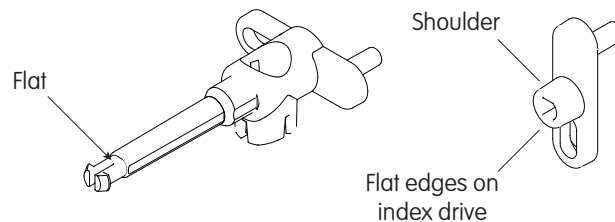
Table 1. Gas module types and associated drive shaft assemblies (continued)

EA_Gas module description	Module style number	Drive shaft replacement kit number	Drive shaft part number	wiggler/coupler/gear part number
Rockwell, integral mount, version 3	EG224000000	1C12553G01	1C12338H01	1B11809H01
Rockwell 415, integral mount version 3	EG244000000	1C12554G01	1C12343H01	1B11819H01

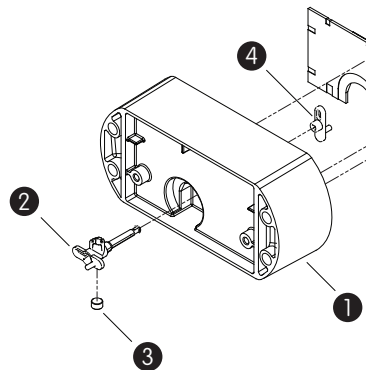
## Drive shaft installation

### AMCO gas module part number EG212000000 or EG214000000

1 For the AMCO gas module part number EG212000000/EG214000000, use replacement shaft/magnet with wiggler kit as specified in Table 1.



2 Check the drive shaft ② for presence of a magnet ③. If the magnet is not pushed into the shaft, do not use the drive shaft. Use a drive shaft that does contain a magnet.



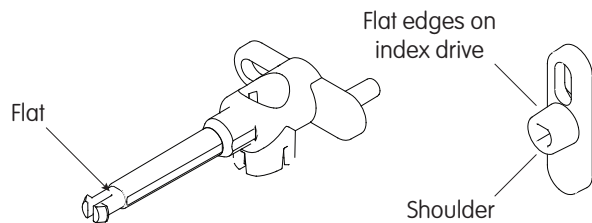
3 Push the shaft ② through the housing ①. The shaft should protrude through the housing.

4 Align the flat edges of the shaft ② with the flat edges of the wiggler ④ and press into place. There should be an audible click when the snap is fully engaged. The shoulder of the wiggler must point toward the housing ①.

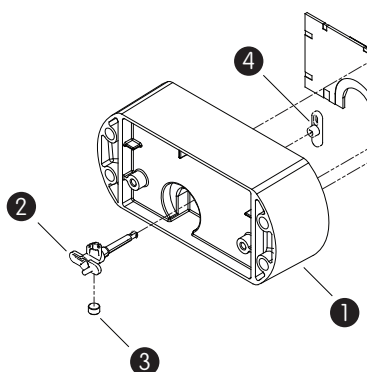
Note: Do not reuse the wiggler or shaft if disassembled after the initial assembly.

### AMCO 5B gas module part number EG252000000 or EG254000000

1 For the AMCO 5B gas module EG252000000/EG254000000, use replacement shaft/magnet with wiggler kit as specified in Table 1.



2 Check the drive shaft ② for presence of a magnet ③. If the magnet is not pushed into the shaft, do not use the drive shaft. Use a drive shaft that does contain a magnet.



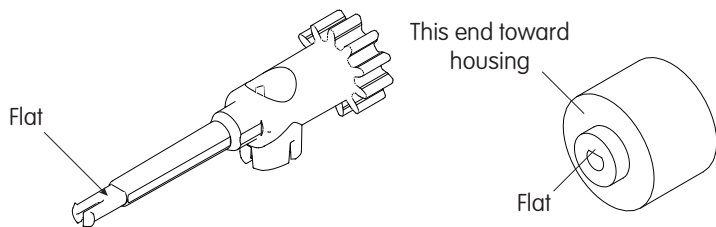
3 Push the shaft ② through the housing ①. The shaft should protrude through the housing.

4 Align the flat edges of the shaft ② with the flat edges of the female wiggler ④ and press into place. There should be an audible click when the snap is fully engaged. The shoulder of the female wiggler must point toward the housing ①.

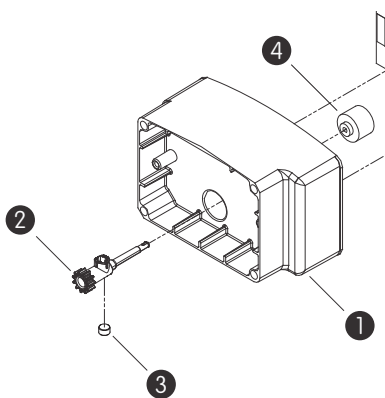
Note: Do not reuse the wiggler or shaft if disassembled after the initial assembly.

### Rockwell gas module part number EG222000000 or EG224000000

1 For the Rockwell gas module EG222000000/EG224000000, use replacement shaft/magnet with the coupler kit as specified in Table 1.



2 Check the drive shaft ② for presence of a magnet ①. If the magnet is not pushed into the shaft, do not use the drive shaft. Use a shaft that does contain a magnet.



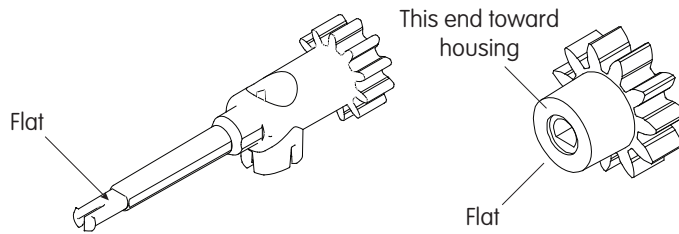
3 Push the drive shaft ② through the housing ③. The shaft should protrude through the housing.

4 Align the flat edges of the shaft ② with the flat edges on the coupler ④ and press into place. There should be an audible click when the snap is fully engaged. The shoulder of the coupler must point toward the housing ③.

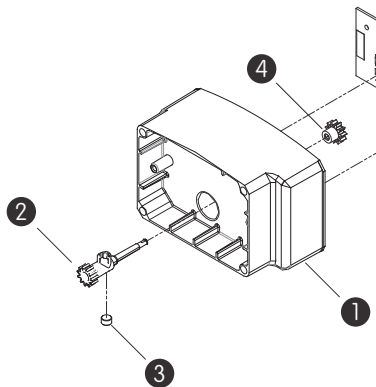
Note: Do not reuse the coupler or shaft if disassembled after initial assembly.

## Rockwell 415 gas module part number EG242000000 or EG244000000

- 1 For Rockwell 415 gas module part number EG242000000/EG244000000, use the replacement shaft/magnet with the coupler kit as specified in Table 1.



- 2 Check the drive shaft ② for presence of a magnet ③. If the magnet is not pushed into the shaft, do not use the shaft. Use a shaft that does contain a magnet.



- 3 Push the shaft ② through the housing ①. The shaft should protrude through the housing.
- 4 Align the flat edges of the shaft ② with the flat edges on the gear ④ and press into place. There should be an audible click when the snap is fully engaged. The shoulder of the gear must point toward the housing ①.

Note: Do not reuse the coupler or shaft if disassembled after initial assembly.

### DISCLAIMER OF WARRANTIES AND LIMITATIONS OF LIABILITY

There are no understandings, agreements, representations, or warranties either express or implied, including warranties of merchantability or fitness for a particular purpose, other than those specifically set out by any existing contract between the parties. Any such contract states the entire obligation of the seller. The contents of this document shall not become part of or modify any prior existing agreement, commitment, or relationship.

The information, recommendations, descriptions, and safety notices in this document are based on Elster Solutions, LLC experience and judgment with respect to operation and maintenance of the described product. This information should not be considered as all-inclusive or covering all contingencies. If further information is required, Elster Solutions, LLC should be consulted.

No warranties, either expressed or implied, including warranties of fitness for a particular purpose or merchantability, or warranties arising from the course of dealing or usage of trade, are made regarding the information, recommendations, descriptions, warnings, and cautions contained herein.

In no event will Elster Solutions, LLC be responsible to the user in contract, in tort (including negligence), strict liability or otherwise for any special, indirect, incidental, or consequential damage or loss whatsoever, including but not limited to: damage or loss of use of equipment, cost of capital, loss of profits or revenues, or claims against the user by its customers resulting from the use of the information, recommendations, descriptions, and safety notices contained herein.